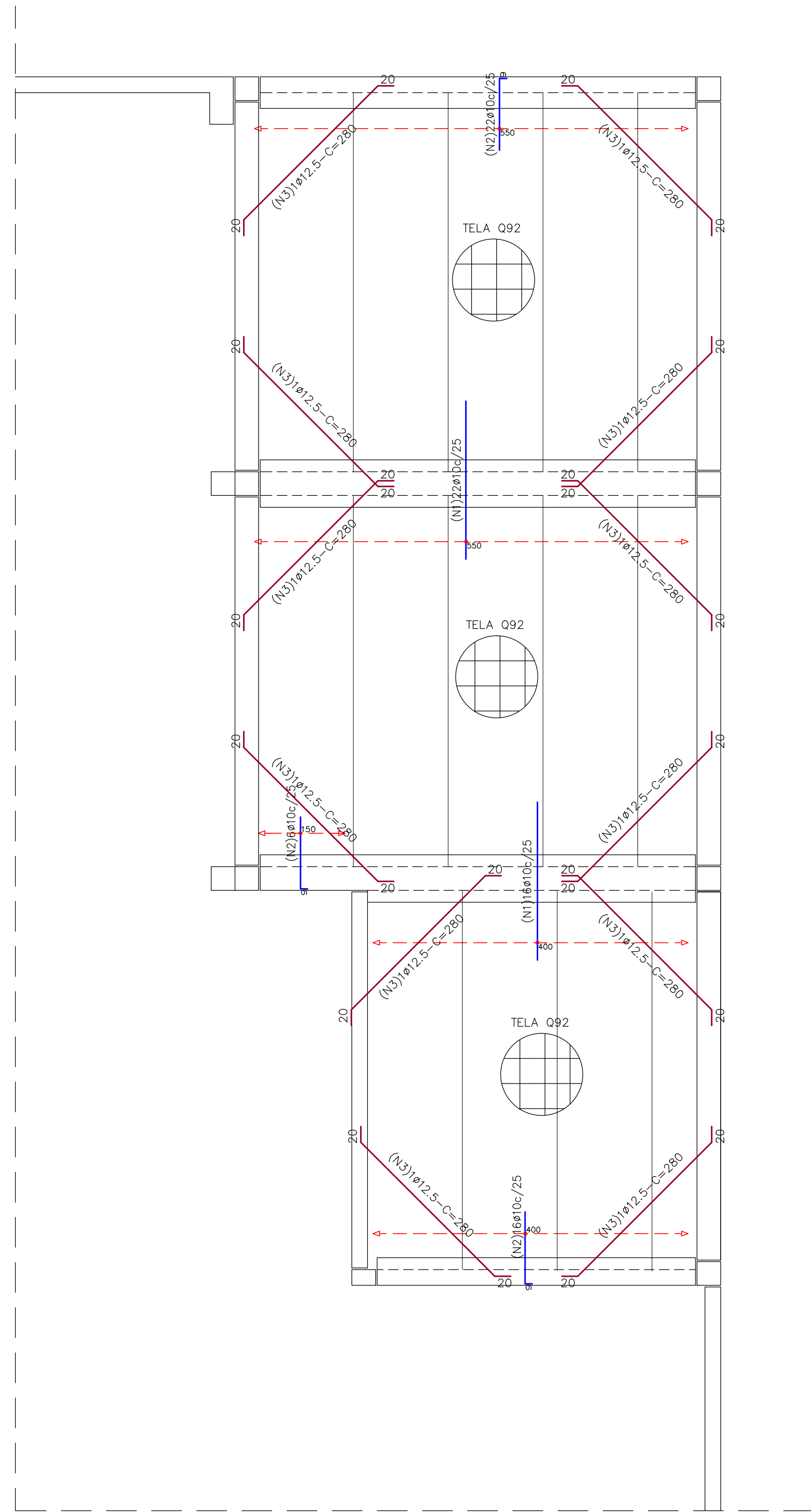
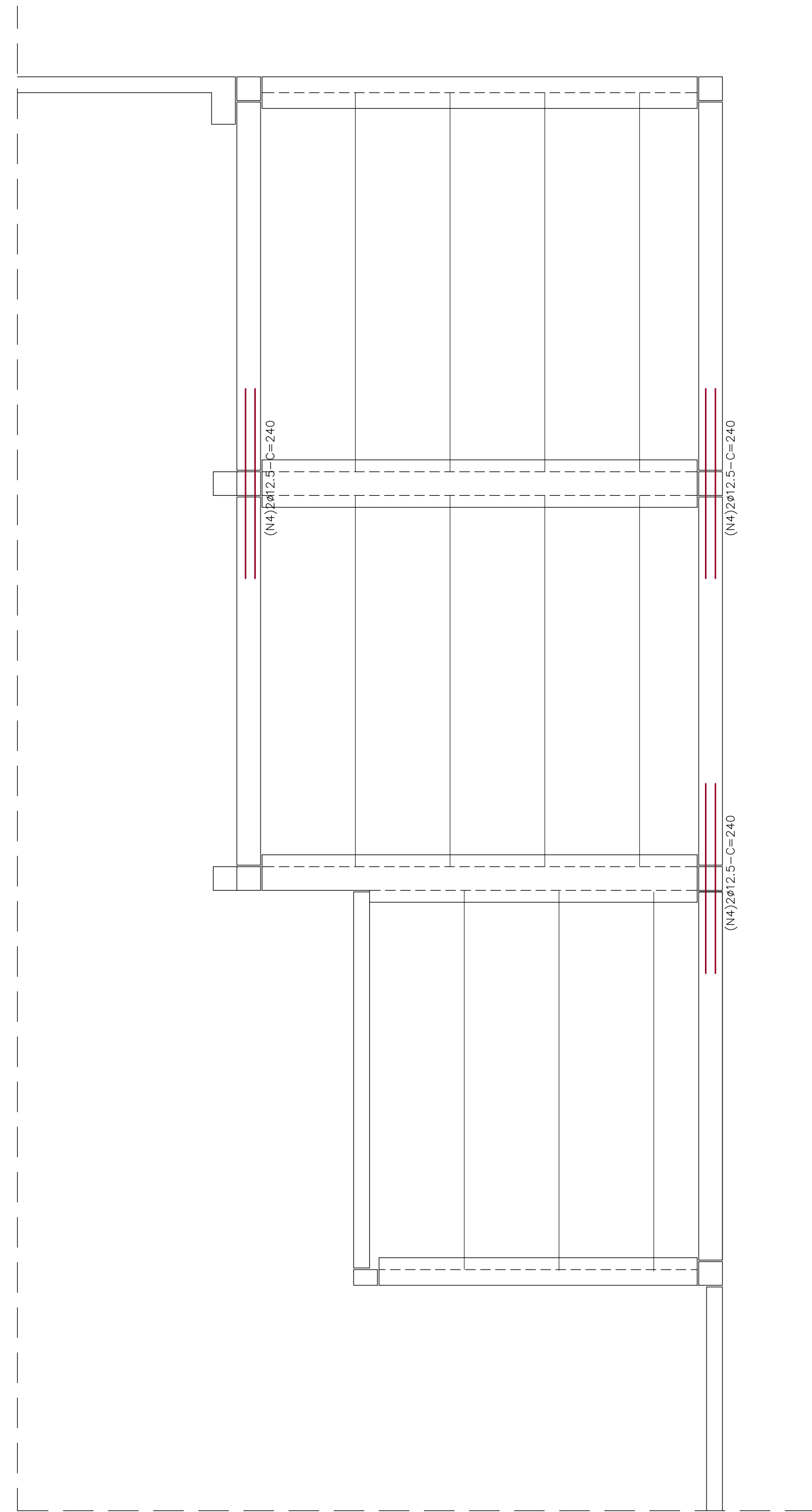


ARMADURAS DO CAPEAMENTO DA LAJE
DA CASA DE MÁQUINAS E CX. D'ÁGUA
ESC 1:50



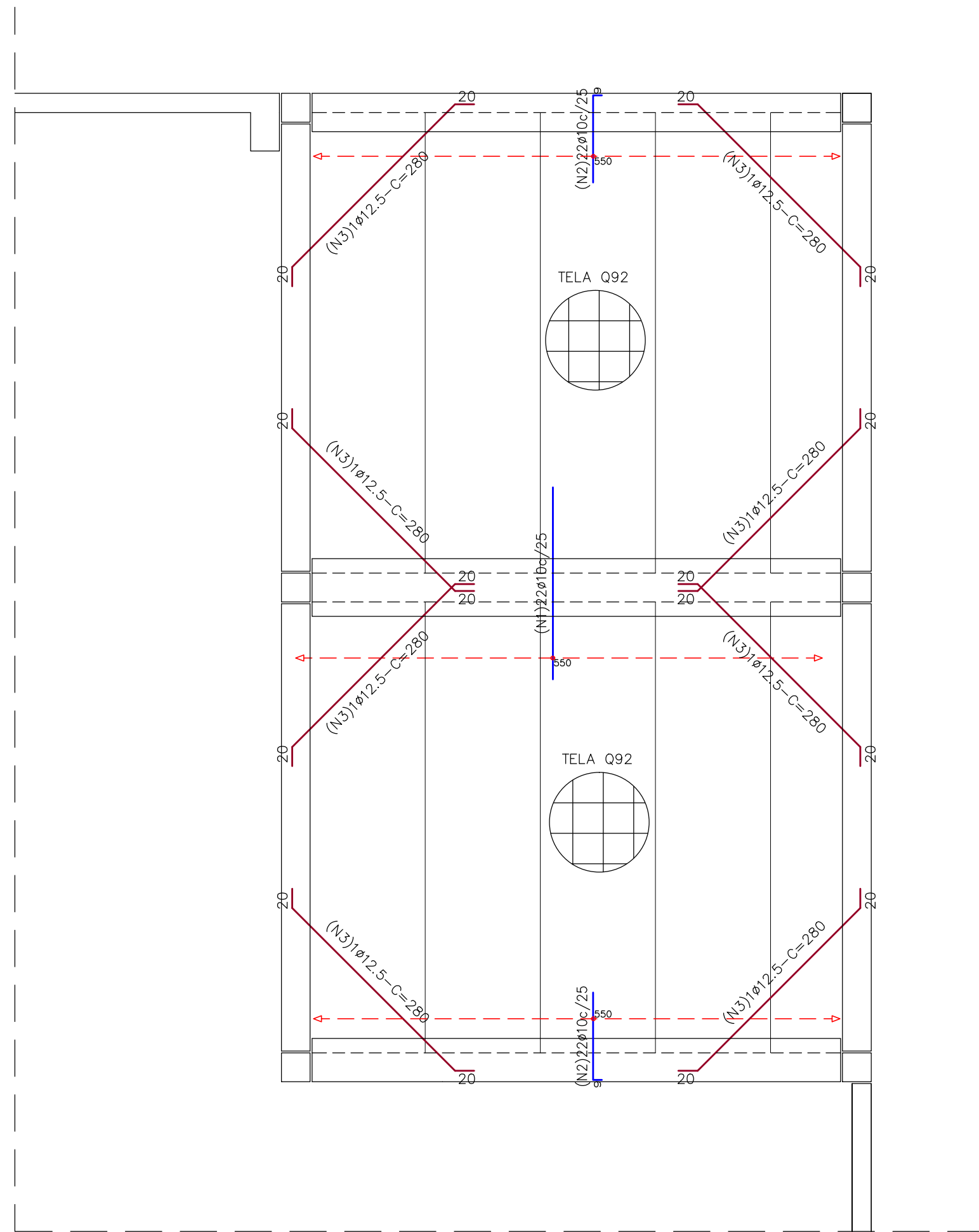
Elemento	Pos.	Diam.	Q.	Do (cm)	Re (cm)	Do (cm)	Comp (cm)	Total (cm)	CA=50 (kg)	CA=60 (kg)
	1	ø10	38	20	200	200	7600	46,8		
	2	ø10	44	9	9	100	4400	27,1		
	3	ø12,5	12	20	240	20	280	3360	33,0	
								Total+10%	117,6	
		ø10:						33,0	0,0	
		ø12,5:						108,7	0,0	
		Total:						33,0	0,0	

ARMADURAS DE LIGAÇÃO DAS VIGAS DA
CASA DE MÁQUINAS E CX. D'ÁGUA
ESC 1:50



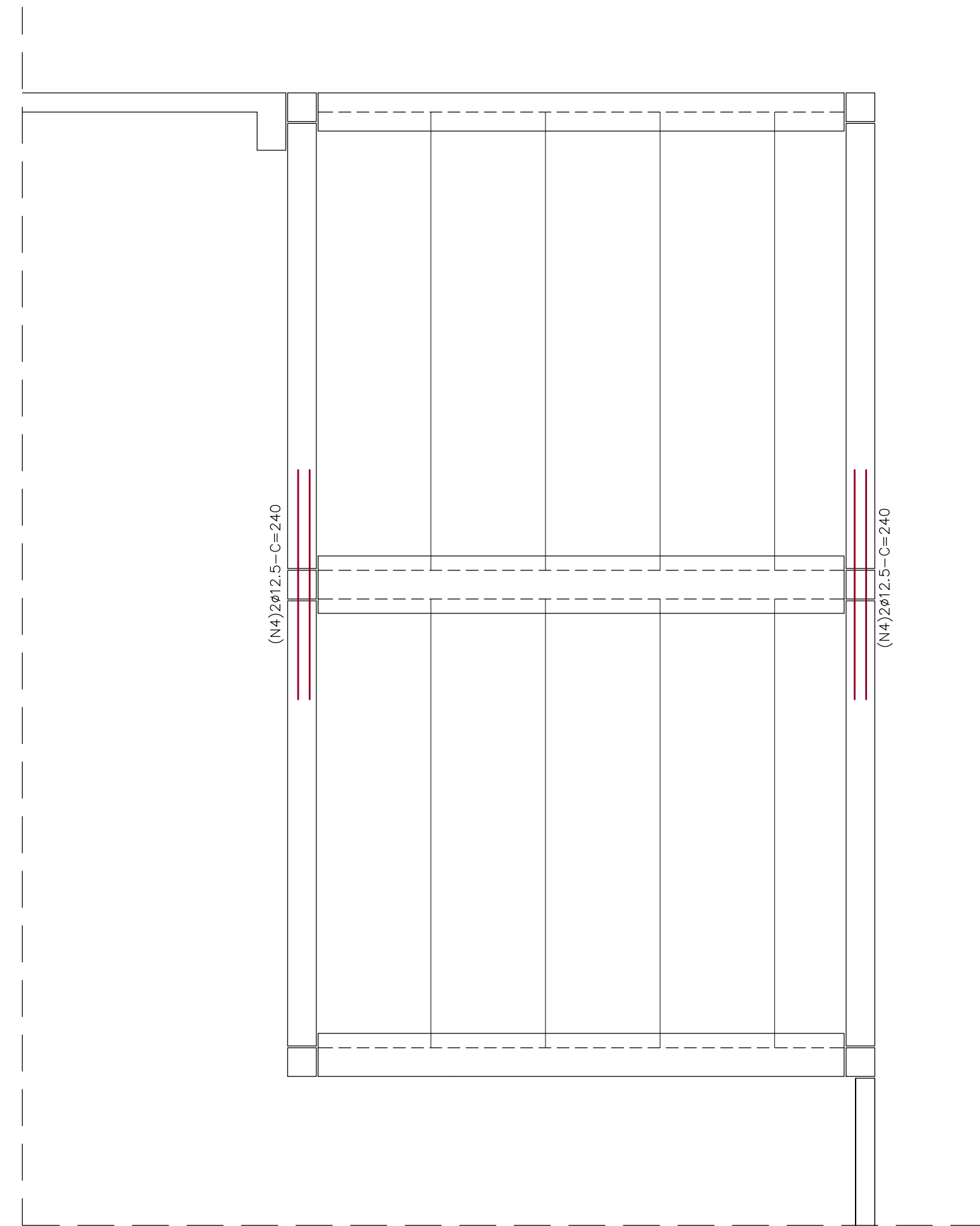
Elemento	Pos.	Diam. (cm)	Q. (cm)	Do (cm)	Reta (cm)	Do (cm)	Comp. (cm)	Total (cm)	CA-50 (kg)	CA-60 (kg)
	4	Ø12.5	6		240		240	1440	14.1	
							Total+10%		14.1	
							Ø12.5:		14.1	0.0
							Total:		14.1	0.0

ARMADURAS DO CAPEAMENTO DA LAJE DA
COB. DA CASA DE MÁQUINAS E CX. D'ÁGUA
ESC 1:50



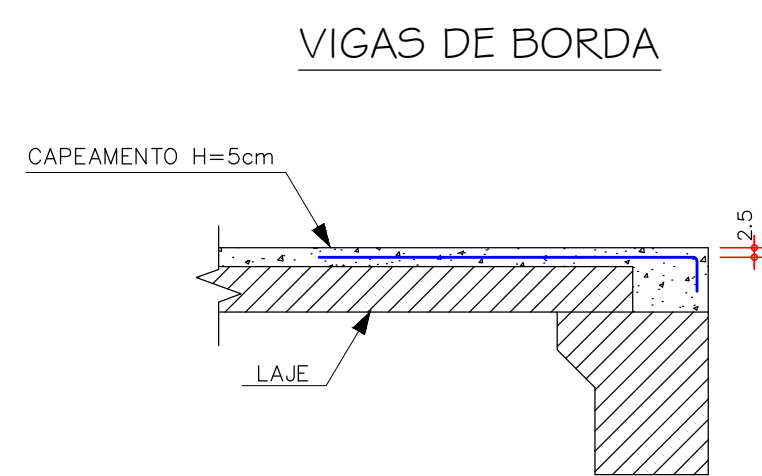
Elemento	Pos.	Diam. (cm)	Q. (cm)	Ret. (cm)	Dob. (cm)	Comp. (cm)	Total (cm)	CA-50 (kg)	CA-60 (kg)
	7	ø10	22	9	200	200	4400	27.1	
	2	ø10	44	9	100	100	4400	27.1	
	3	ø12.5	8	20	240	280	2240	21.9	
							Total+10%	83.7	
							ø10:	59.6	0.0
							ø12.5:	24.1	0.0
							Total:	83.7	0.0

ARMADURAS DE LIGAÇÃO DAS VIGAS DA
COB. CASA DE MÁQUINAS E CX. D'ÁGUA
ESC 1:50

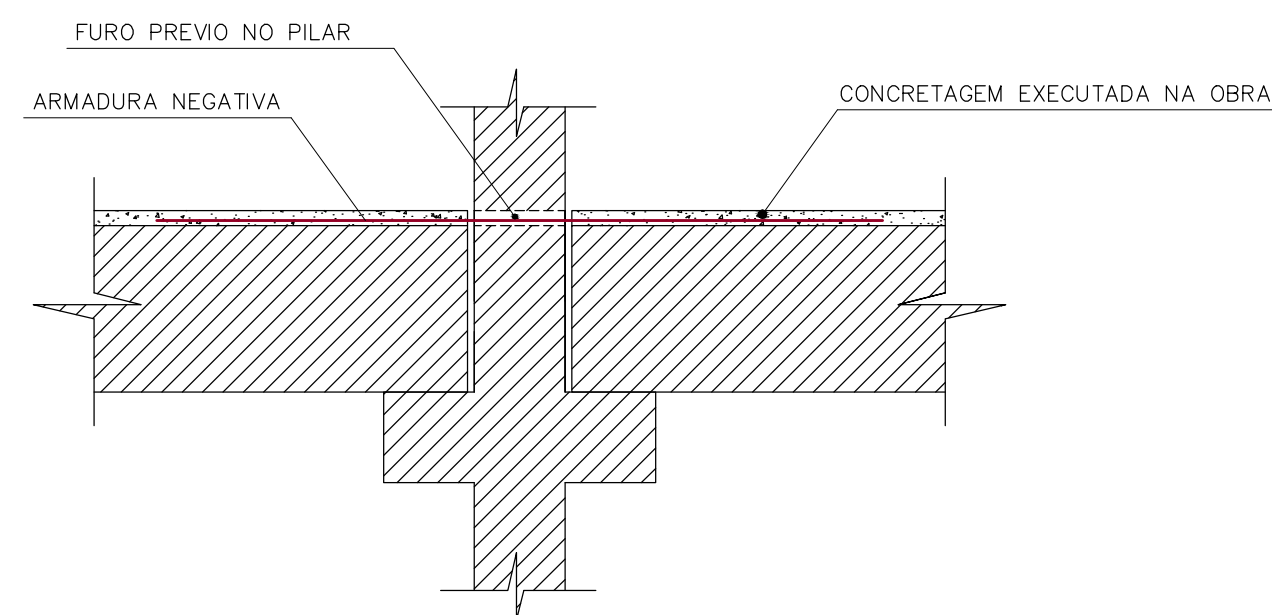


Elemento	Pos.	Diam.	Q.	Dob.(cm)	Reta.(cm)	Dob.(cm)	Comp.(cm)	Total (cm)	CA-50 (kg)	CA-60 (kg)
	4	Ø12,5	6		240		240	1440	14.1	
							Total+10%		14.1	
							Ø12,5:		14.1	0.0
							Total:		14.1	0.0

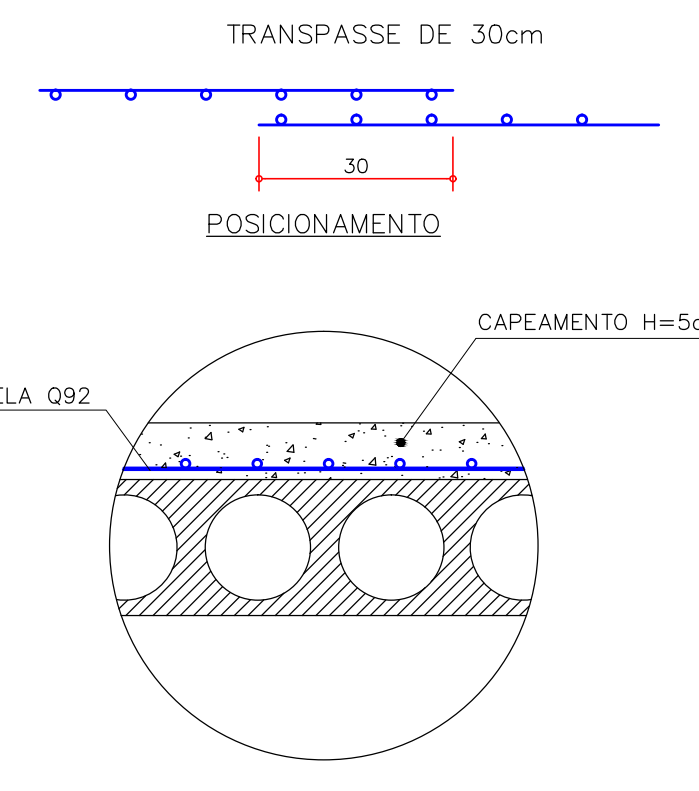
DETALHE DO POSICIONAMENTO DAS ARMADURAS NEGATIVAS DAS LAJES



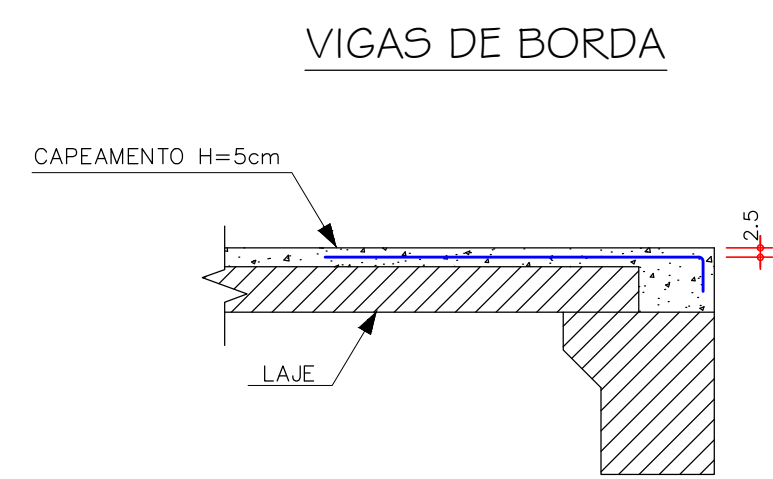
DETALHE DO POSICIONAMENTO DAS ARMADURAS NEGATIVAS DAS VIGAS



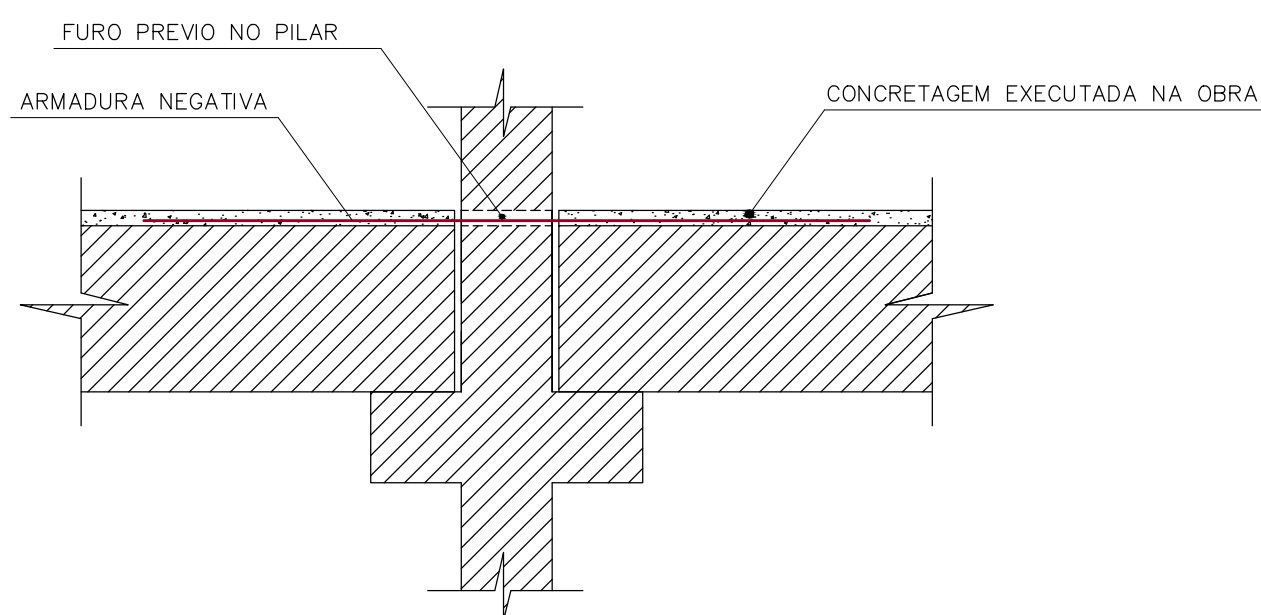
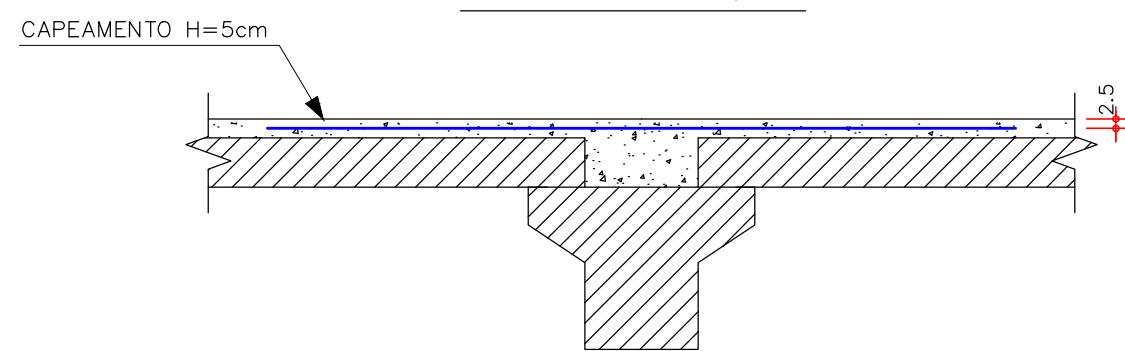
DETALHE DA TELA Q92



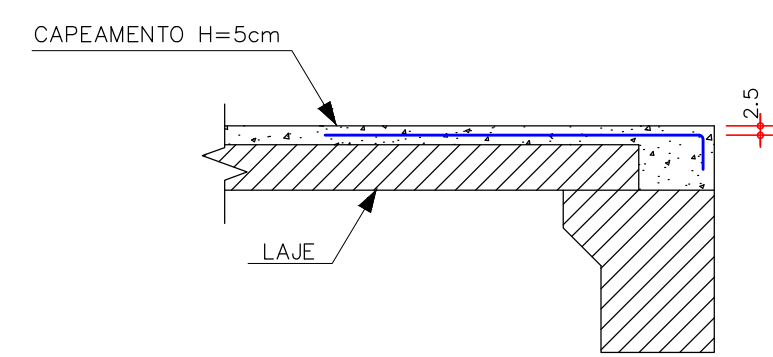
DETALHE DO POSICIONAMENTO DAS ARMADURAS NEGATIVAS DAS LAJES



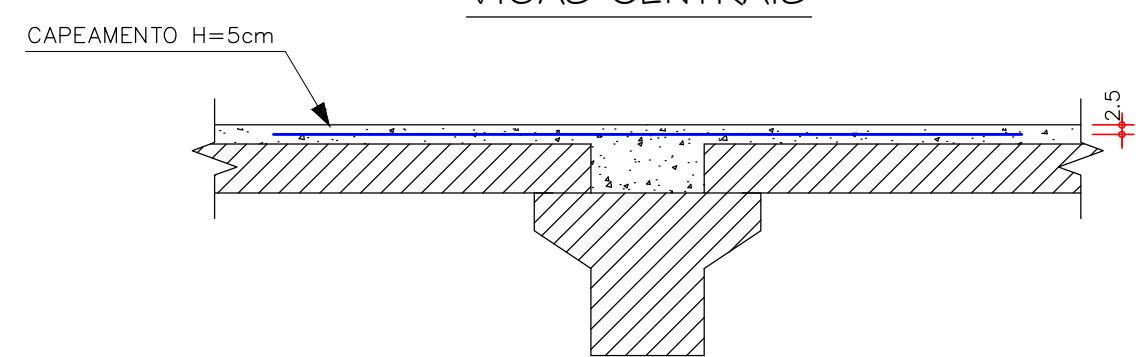
DETALHE DO POSICIONAMENTO DAS ARMADURAS NEGATIVAS DAS VIGAS


VIGAS CENTRAIS

VIGAS DE BORDA





VIGAS CENTRAIS



RAIO DE CURVATURA DAS BARRAS			CONCRETO ADOTADO	
	ϕ	R (cm)	ϕ	R (cm)
	4,2	1,25	10,0	250
	5,0	1,50	12,5	315
	6,3	1,80	16,0	400
	8,0	2,00	20,0	800
fck = 30 MPa $f_{cj} = f_{ck} + 1,65 \times S_d$			$\left\{ \begin{array}{l} 4 \text{ MPa} \\ 5,5 \text{ MPa} \\ 7 \text{ MPa} \end{array} \right.$	
DE ACORDO COM O ITEM 8.3.1.2 DA NBR-6118				

REVISÃO		
Nº	DESCRIÇÃO	DATA

 <p>GONZÁLEZ ENGENHARIA E CONSTRUÇÃO CIVIL</p>	<p>www.gonzalezengenharia.org.br E-mail: projeto@gonzalezengenharia.org.br gonzalezengenharia@oceanp.org.br Fone: (41)99996-8602</p>	 <p>ASSOCIAÇÃO BRASILEIRA DE ENGENHARIA E CONSTRUÇÃO CIVIL - ABCEC</p>
<p>CIDR: NOVA SEDE DA PREFEITURA MUNICIPAL</p>		
<p>PROFISSIONÁRIO: PREFEITURA MUNICIPAL DE CONTENDA</p>		
<p>LOCAL: CONTENDA - PR</p>		
<p>ESPECIFICAÇÃO:</p> <p>ARMADURAS DO CAPEAMENTO DAS LAJES DA COB. DA MAQ. E CX D'ÁGUA ARMADURAS DO CAPEAMENTO DAS LAJES DA COB. DA MAQ. E CX D'ÁGUA</p> <div data-bbox="2905 1725 2954 1734" style="float: right; border: 1px solid black; padding: 5px; text-align: center;"> PROJETO Nº 22 </div>		